



- In 1981 Ivey Ranch Park Assoc. (IRPA) was founded and incorporated by a group of parents who had a vision of a place that would care for their children with special needs and provide recreational programs for them.
- IRPA's mission is the social interaction of children with and without special needs by providing educational and recreational activities with an emphasis on programs for children with special needs.
- Servicing the North San Diego County areas of Oceanside, Carlsbad, San Marcos, Bonsall, Fallbrook, Camp Pendleton, and Vista.
- IRPA is a 12-acre park that is comprised of childcare and development centers, an equestrian park and therapeutic riding program, a memorial tree program, community garden, in-home respite services, Camp Ivey Summer Camp, an equine facilitated learning program, and *Horses for Heroes*.

Ivey Ranch Park Assoc.
110 Rancho del Oro Dr
Oceanside, CA 92057
(760) 722-4839
www.iveyranch.com

Ivey Ranch Park Assoc.

38 YEARS
OF SERVICE
1981-2019

A Glance at 2018-2019

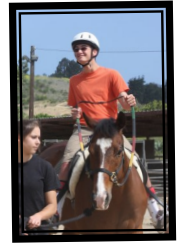
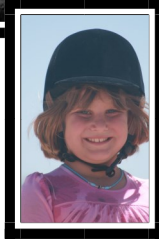
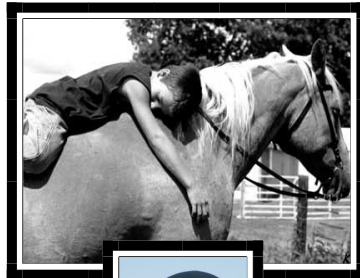
Fiscal year 7/1/18 to 6/30/19

Our Clients

Total Number of Clients Served: 458

- 77% of clients under 18 years old
- 23% of clients over 18 years old
- 11% of clients with a physical disability*
- 68% of clients with a cognitive disability*
- 21% of clients with both a physical and cognitive disability*
- 57% of clients are male*
- 43% of clients are female*

*Daycare, In-Home Care, Therapeutic Riding Programs Only



Top 10 Diagnoses Treated at Ivey Ranch Park

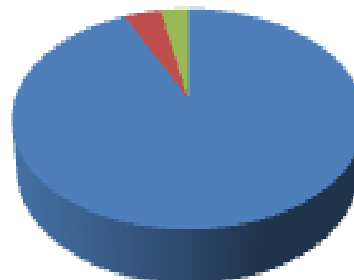
- | | | |
|--------------------------------|--------------------|-----------------------|
| 1 Autism Spectrum / Asperger's | 5 Down Syndrome | 8 Depression |
| 2 ADHD/ ADD | 6 Anxiety | 9 Sensory Disorder |
| 3 Developmental Delay | 7 Seizure Disorder | 10 Muscular Dystrophy |
| 4 Cerebral Palsy | | |

Our Volunteers & Staff

- Number of yearly volunteers: 963 with approximately **14,404 hours** of service, including child care, therapy horseback riding lessons, ranch maintenance, and events
- 3 **full-time** staff
- 31 **part-time** staff
- 21 **horses in service** to our clients, ages 11-32 years old.



Revenue Dollars



- 92% was spent on programs
- 4% was spent on management / general operating expenses
- 4% was spent on fundraising

